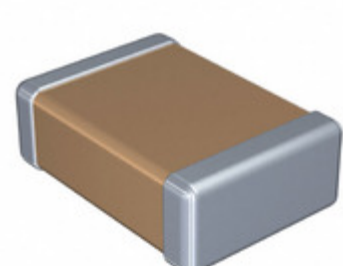


**C4532X7R2J683M160KA**



**Part Number:** [C4532X7R2J683M160KA](#)

**Manufacturer:** [TDK Corporation](#)

**Description:** CAP CER 0.068UF 630V X7R 1812

- Data sheet:**
- [C4532X7R2J683M160KA Character Sheet](#)
  - [C Series, Gen Appl & Mid-Voltage Spec](#)
  - [C Series, Mid Voltage Datasheet](#)

**RoHS Status:** Lead free / RoHS Compliant

**Ship From:** Hong Kong

**Shipment Way:** DHL/Fedex/TNT/UPS/EMS

Images are for reference only.  
See Product Specifications for product details.  
**Buy C4532X7R2J683M160KA with confidence from Component-World.HK, 1 Year Warranty**

[Request For Quotation](#)

**PRODUCT PARAMETER**

|                                       |  |   |   |
|---------------------------------------|--|---|---|
| <b>Part Number</b>                    | C4532X7R2J683M160KA  | <b>Manufacturer</b>                     | <a href="#">TDK Corporation</a>   |
| <b>Description</b>                    | CAP CER 0.068UF 630V X7R 1812                              | <b>Lead Free Status / RoHS Status</b>   | Lead free / RoHS Compliant  |
| <b>Quantity Available</b>             | 310895 pcs   | <b>Data sheet</b>                       | <a href="#">C4532X7R2J683M160KA Character Sheet</a><br><a href="#">C Series, Gen Appl &amp; Mid-Voltage Spec</a><br><a href="#">C Series, Mid Voltage Datasheet</a> |
| <b>Category</b>                       | <a href="#">Capacitors</a>                                 | <b>Voltage - Rated</b>                  | 630V  |
| <b>Tolerance</b>                      | ±20%   | <b>Thickness (Max)</b>                  | 0.071" (1.80mm)   |
| <b>Temperature Coefficient</b>        | X7R  | <b>Size / Dimension</b>                 | 0.177" L x 0.126" W (4.50mm x 3.20mm)   |
| <b>Series</b>                         | C  | <b>Ratings</b>                          | -   |
| <b>Packaging</b>                      | Tape & Reel (TR)   | <b>Package / Case</b>                   | 1812 (4532 Metric)  |
| <b>Other Names</b>                    | 445-4518-2<br>C4532X7R2J683M<br>C4532X7R2J683MT020U        | <b>Operating Temperature</b>            | -55°C ~ 125°C   |
| <b>Mounting Type</b>                  | Surface Mount, MLCC  | <b>Moisture Sensitivity Level (MSL)</b> | 1 (Unlimited)   |
| <b>Lead Style</b>                     | -  | <b>Lead Spacing</b>                     | -   |
| <b>Lead Free Status / RoHS Status</b> | Lead free / RoHS Compliant                                 | <b>Height - Seated (Max)</b>            | -   |
| <b>Features</b>                       | -  | <b>Failure Rate</b>                     | -   |
| <b>Detailed Description</b>           | 0.068µF ±20% 630V Ceramic Capacitor X7R 1812 (4532 Metric) | <b>Capacitance</b>                      | 0.068µF   |
| <b>Applications</b>                   | General Purpose  |   |   |

Component-World.com is a Reliable Stocking Distributor of Electronic Components. We specialize in all TDK Corporation series electronic components. We have 310895 pieces of TDK Corporation C4532X7R2J683M160KA in stock available now. Request a quote from electronics components distributor at Component-World.com, our sales team will contact you within 24 hours.  
RFQ Email: [info@Components-World.com](mailto:info@Components-World.com)

**RELATED PRODUCTS**

|  |  |   |                     |
|--|--|---|---------------------|
|  | <b>Part#:</b> <a href="#">C4532X7R2J683K160KM</a><br><b>Description:</b> CAP CER 0.068UF 630V X7R 1812 | <b>Manufacturers:</b> <a href="#">TDK Corporation</a> | <a href="#">RFQ</a> |
|  | <b>Part#:</b> <a href="#">C4532X7R3A472M160KA</a><br><b>Description:</b> CAP CER 4700PF 1KV X7R 1812   | <b>Manufacturers:</b> <a href="#">TDK Corporation</a> | <a href="#">RFQ</a> |
|  | <b>Part#:</b> <a href="#">C4532X7R3A103K200KA</a><br><b>Description:</b> CAP CER 10000PF 1KV X7R 1812  | <b>Manufacturers:</b> <a href="#">TDK Corporation</a> | <a href="#">RFQ</a> |
|  | <b>Part#:</b> <a href="#">C4532X7R2E474K230KM</a><br><b>Description:</b> CAP CER 0.47UF 250V X7R 1812  | <b>Manufacturers:</b> <a href="#">TDK Corporation</a> | <a href="#">RFQ</a> |
|  | <b>Part#:</b> <a href="#">C4532X7R2J104K230KA</a><br><b>Description:</b> CAP CER 0.1UF 630V X7R 1812   | <b>Manufacturers:</b> <a href="#">TDK Corporation</a> | <a href="#">RFQ</a> |
|  | <b>Part#:</b> <a href="#">C4532X7R2J104M230KA</a><br><b>Description:</b> CAP CER 0.1UF 630V X7R 1812   | <b>Manufacturers:</b> <a href="#">TDK Corporation</a> | <a href="#">RFQ</a> |
|  | <b>Part#:</b> <a href="#">C4532X7R3D222M130KE</a><br><b>Description:</b> CAP CER 2200PF 2KV X7R 1812   | <b>Manufacturers:</b> <a href="#">TDK Corporation</a> | <a href="#">RFQ</a> |
|  | <b>Part#:</b> <a href="#">C4532X7R3A472K160KA</a><br><b>Description:</b> CAP CER 4700PF 1KV X7R 1812   | <b>Manufacturers:</b> <a href="#">TDK Corporation</a> | <a href="#">RFQ</a> |
|  | <b>Part#:</b> <a href="#">C4532X7R2J104K230KM</a><br><b>Description:</b> CAP CER 0.1UF 630V X7R 1812   | <b>Manufacturers:</b> <a href="#">TDK Corporation</a> | <a href="#">RFQ</a> |
|  | <b>Part#:</b> <a href="#">C4532X7S2A335M200KB</a><br><b>Description:</b> CAP CER 3.3UF 100V X7S 1812   | <b>Manufacturers:</b> <a href="#">TDK Corporation</a> | <a href="#">RFQ</a> |
|  | <b>Part#:</b> <a href="#">C4532X7R2E474M230KA</a><br><b>Description:</b> CAP CER 0.47UF 250V X7R 1812  | <b>Manufacturers:</b> <a href="#">TDK Corporation</a> | <a href="#">RFQ</a> |
|  | <b>Part#:</b> <a href="#">C4532X7S2A335K200KB</a><br><b>Description:</b> CAP CER 3.3UF 100V X7S 1812   | <b>Manufacturers:</b> <a href="#">TDK Corporation</a> | <a href="#">RFQ</a> |
|  | <b>Part#:</b> <a href="#">C4532X7R2J104K230KE</a><br><b>Description:</b> CAP CER 0.1UF 630V X7R 1812   | <b>Manufacturers:</b> <a href="#">TDK Corporation</a> | <a href="#">RFQ</a> |
|  | <b>Part#:</b> <a href="#">C4532X7R3D222M130KA</a><br><b>Description:</b> CAP CER 2200PF 2KV X7R 1812   | <b>Manufacturers:</b> <a href="#">TDK Corporation</a> | <a href="#">RFQ</a> |
|  | <b>Part#:</b> <a href="#">C4532X7R2J104M230KE</a><br><b>Description:</b> CAP CER 0.1UF 630V X7R 1812   | <b>Manufacturers:</b> <a href="#">TDK Corporation</a> | <a href="#">RFQ</a> |
|  | <b>Part#:</b> <a href="#">C4532X7R2E474M230KE</a><br><b>Description:</b> CAP CER 0.47UF 250V X7R 1812  | <b>Manufacturers:</b> <a href="#">TDK Corporation</a> | <a href="#">RFQ</a> |
|  | <b>Part#:</b> <a href="#">C4532X7R3D222K130KA</a><br><b>Description:</b> CAP CER 2200PF 2KV X7R 1812   | <b>Manufacturers:</b> <a href="#">TDK Corporation</a> | <a href="#">RFQ</a> |
|  | <b>Part#:</b> <a href="#">C4532X7R3A103M200KA</a><br><b>Description:</b> CAP CER 10000PF 1KV X7R 1812  | <b>Manufacturers:</b> <a href="#">TDK Corporation</a> | <a href="#">RFQ</a> |
|  | <b>Part#:</b> <a href="#">C4532X7R3D222K130KE</a><br><b>Description:</b> CAP CER 2200PF 2KV X7R 1812   | <b>Manufacturers:</b> <a href="#">TDK Corporation</a> | <a href="#">RFQ</a> |
|  | <b>Part#:</b> <a href="#">C4532X7R2J683K160KA</a><br><b>Description:</b> CAP CER 0.068UF 630V X7R 1812 | <b>Manufacturers:</b> <a href="#">TDK Corporation</a> | <a href="#">RFQ</a> |

**Related keywords for C4532X7R2J683M160KA**

|  |   |  |   |
|--|---|--|---|
| <a href="#">TDK Corporation C4532X7R2J683M160KA</a>    | <a href="#">C4532X7R2J683M160KA distributor</a> | <a href="#">C4532X7R2J683M160KA supplier</a> | <a href="#">C4532X7R2J683M160KA price</a> |
| <a href="#">C4532X7R2J683M160KA download datasheet</a> | <a href="#">C4532X7R2J683M160KA datasheet</a>   | <a href="#">C4532X7R2J683M160KA stock</a>    | <a href="#">buy C4532X7R2J683M160KA</a>   |
| <a href="#">TDK Corporation C4532X7R2J683M160KA</a>    |   |  |   |